



PRINCE WILLIAM
COUNTY



Route 28 Bypass

Transportation Tuesday

Design Process and Timeline

April 27, 2021

Purpose

To provide a forum for stakeholders to learn about specific topics related to the Route 28 Bypass project.

Outcomes

- Understanding of the Design Process and Timeline of the Route 28 Bypass project.
- Opportunity to deep dive into questions about the project.

Agenda

- 1 **Welcome**
- 2 **Session Focus**
- 3 **What We Know Today**
- 4 **What Will Happen Next**
- 5 **How to Stay Involved**
- 6 **Close**



PWC Department of Transportation:

Rick Canizales, Director

Khattab Shammout, Assistant Director for Design and Construction

Dagmawie Shikurye, Engineering Manager

Paolo Belita, Planning Manager

Fairfax County:

Todd Minnix, Transportation Design Division Chief

City of Manassas:

Lance Kilby, Engineering Director



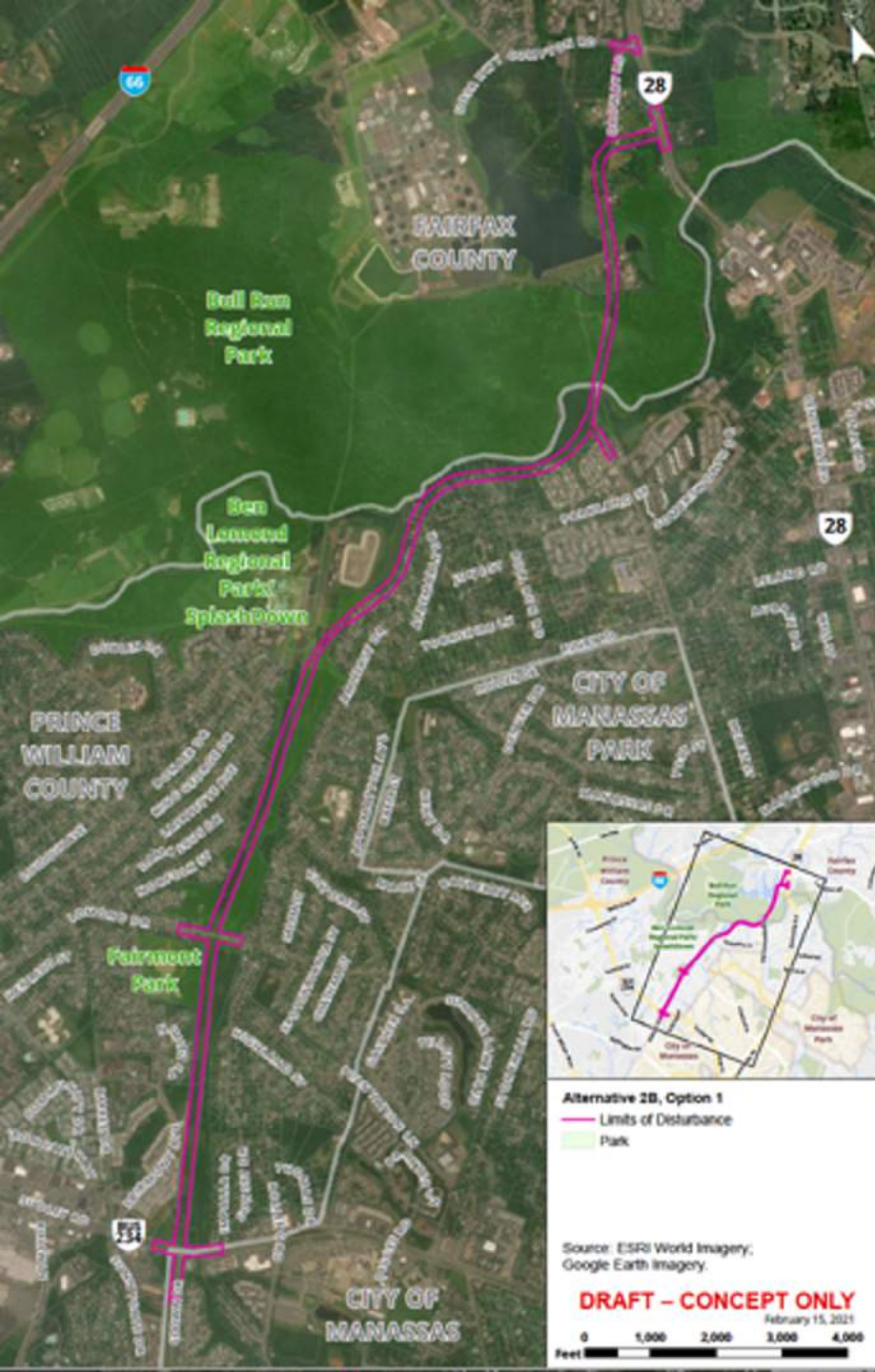


Route 28 Bypass
Project Overview



Prince William Board of County Supervisors (BOCS) endorsed the Route 28 Bypass Option in September 2020

- This represents the Route 28 Bypass corridor concept.
- The specifics of the corridor will be determined during the Design and Engineering Phase (Phase 2).
- The actual Bypass will have a smaller footprint than currently represented on this map.





Today's Focus

Design Process and Timeline

Key Questions

1. What is the Route 28 Bypass project timeline?
 - a. What are the key milestones during the current phase, Design and Engineering?
2. What coordination is being done with other jurisdictions?
3. How will the county select the final design and location of the Route 28 Bypass ?
4. What will be the exact location of the Route 28 Bypass be? When will we know the final location?
5. Who needs to approve the Route 28 Bypass Design Plans?
6. How will this project improve congestion and the transportation network?
7. How can the community stay involved? What additional opportunities are available to provide input on design?



What We Know Today



What is the timeline of the Route 28 Bypass Project?

1

2016 – 2020

Plan & Study

- Develop Concepts
- Conduct feasibility, environmental, & other studies
- Evaluate the options
- Technical and executive committees that included Fairfax County staff and elected officials



**Plan & Study Complete:
Route Selected**

Approved by PWC Board of County Supervisors in **Sep. 2020**

2

2020 – 2023

Design & Engineering

- Release RFP – Published on Route 28 Bypass Website
- Select engineering design firm
- Complete comprehensive design process
- Determine the exact location and final design of Route 28 Bypass
- US Army Corps of Engineers Permits
- PWC Board of County Supervisors will review and approve the final design
- Ensure coordination between FFX/PWC

3

2023 – 2025

Right of Way & Utilities

- Begin working with affected residents
- Utility work

4

2025-2027

Construction

- Groundbreaking
- Construction
- Ribbon cutting



What are the key milestones during the current phase, Design and Engineering?

Project Timing and Key Milestones

- Select an Engineering Firm - **Summer/Fall 2021**
- Engineering Design
- Traffic Analyses
- Surveying
- Right-of-way and Utility Coordination
- Plan submission to Prince William and Fairfax County
- Design endorsement

Ongoing Activities

- Environmental Studies
- Public Meetings
- Coordination with other Jurisdictions and stakeholders including VDOT, DEQ, DHR, Fairfax County, NVTa, Manassas Park, the City of Manassas, and others



- PWC DOT will actively seek input and provide updates to residents and commuters from the region.
- PWC DOT will also continue coordinating with local partners in other jurisdictions, including Fairfax County, Manassas Park, and City of Manassas
- VDOT and other state agencies will be involved throughout the permitting process



- Co-hosted public information sessions have been held in the past and will continue to be held going forward.
- Technical and executive committee meeting discussions occurred during the planning/study stage when alternatives were being evaluated.
- Includes members of the Fairfax County Board of Supervisors, who will continue to be involved for the duration of the project.
- 30/70/100 of the designs will be shared with other jurisdictional stakeholders



What Will Happen Next?



What are key activities in the Design Process?

- Engineering Design
- Traffic Engineering
- Surveying
- Utility Coordination
- Environmental Engineering
- Right-of-Way Determination



What will be the **exact location of the Route 28 Bypass?** When would we know the final location?

- Exact location of the Route 28 Bypass will be determined during the **Design and Engineering Phase**
- The Design Firm will be responsible for:
 - Engineering Design, Traffic Analyses, Survey, Utility Coordination, further Environmental Mitigation and determine final impacts to properties for right-of-way.
- There will be ample opportunity for the public to provide comments throughout this time
 - 5 official public meetings.
 - Several other information sessions events and communications.
 - A public information meeting once we are at 30% of the design and a formal public hearing at 70% of the design.



Who needs to approve the Route 28 Bypass Design Plans?

- PWC DOT will submit permits for the Route 28 Bypass to the **US Army Corps of Engineers, Virginia Dept of Environmental Quality, and Marine Resource Commission** once substantial design is completed.
- **VDOT** will have oversight throughout the project, including design review and approval. Once the project is completed, maintenance and ownership of the roadway will be handed over to VDOT.
- The **Prince William Board of County Supervisors** will be requested to endorse the final engineering design for the Route 28 Bypass as part of a Public Hearing.
- **Fairfax County** will need to review and approve within various departments based on the standards set in Fairfax County.

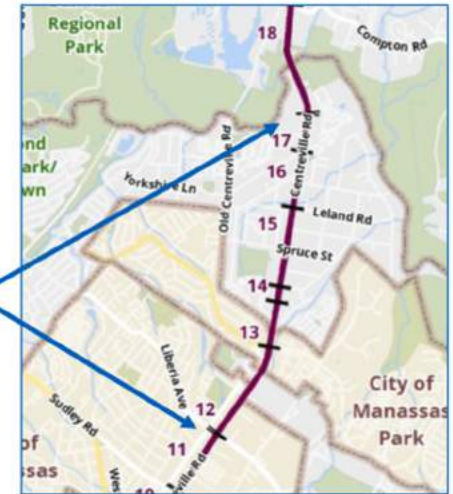


How will this project improve congestion and the Transportation Network?

- The project will provide a separate facility that will enhance the availability of alternate routes and overall connectivity options.
- The Bypass will provide an opportunity for additional transit routes, including routes that provide for service at higher levels of reliability.
- Once Engineering Firm is selected, the Design Phase will provide more accurate, specific, and detailed traffic data at all intersections.
- Future Studies will be conducted to re-evaluate the projects impact

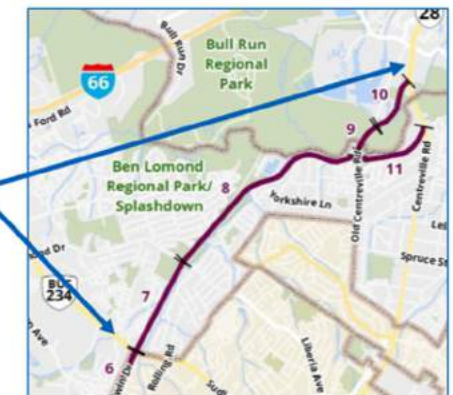
Existing and Future Average Daily Traffic Volumes (From Travel Demand Model) - Existing Route 28 - Liberia Avenue to Orchard Bridge Drive

Existing (2018)	50,500
2040 No Build	75,000
2040 with Alternative 2B	62,500
2040 with Alternative 4	85,000



Future Average Daily Traffic Volumes (From Travel Demand Model) - Route 28 Bypass (2B) - Sudley Road to Existing Route 28

2040 Alternative 2B	63,000
---------------------	--------



How to Stay Involved



What opportunities are available to provide input on design process and timeline?

1. Reach out to Route28Bypass@pwcgov.org

2. Attend and provide input at **additional public information sessions** (Will be announced on Route28Bypass.com Website)

3. Connect with your **County Supervisor and other local elected officials**



How can I find the latest information about the project?

The following efforts will continue throughout the entire project lifecycle.

1. Public Information Meetings

Such as this one in Prince William County.

2. Route28Bypass.com Website





3. Social Media/Listservs

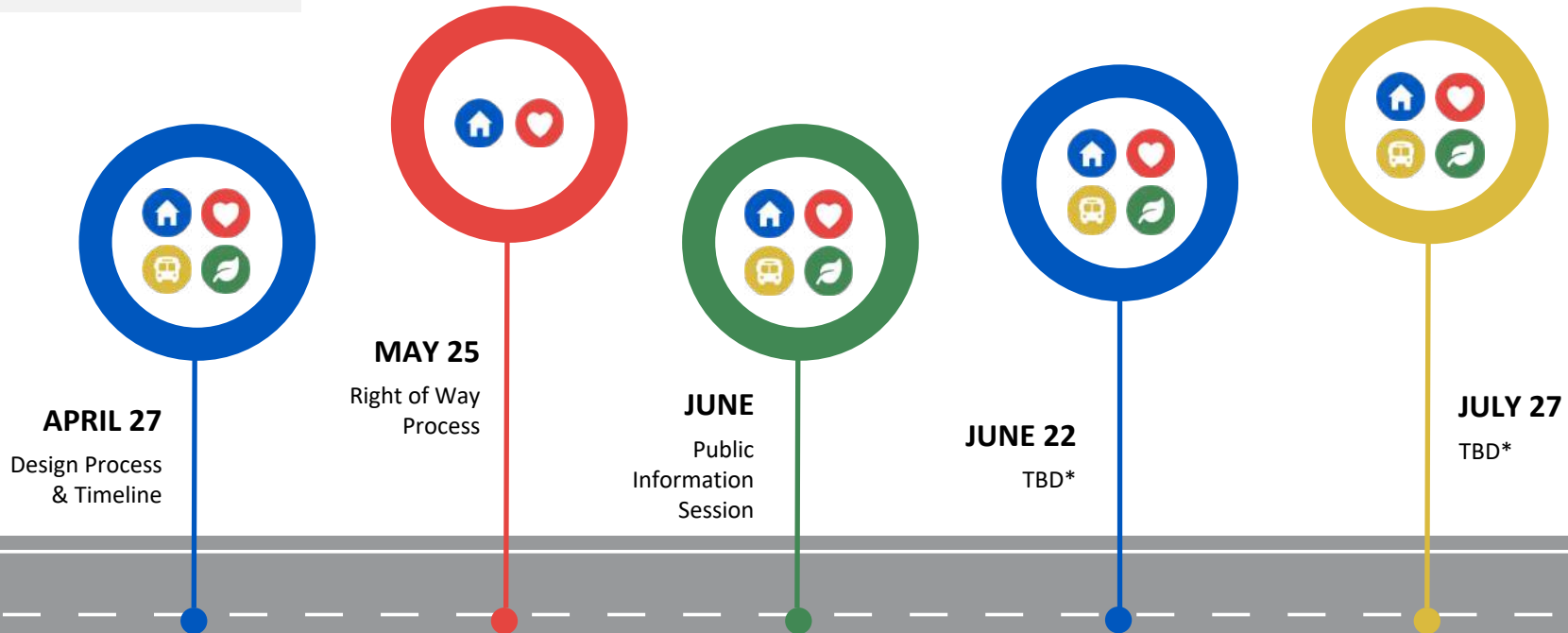
Board of County Supervisor Listserv, PWC DOT Listservs, Website Listserv, Facebook, Twitter.



Upcoming Events

KEY

-  My Home & Family
-  My Community
-  My Commute
-  My Environment



If you have questions before the session or would like to submit a topic for discussion, please contact the PWC DOT at route28bypass@pwcgov.org.



Thank You

A faint, light blue illustration of a hand holding a scale of justice is visible in the background on the right side of the slide. The hand is at the top, holding the top of the scale's vertical beam. The scale's pans are visible below, and the base of the scale is decorated with leaf-like patterns.

Website

www.route28bypass.com

Questions

Route28Bypass@pwcgov.org