



PRINCE WILLIAM
COUNTY



Route 28 Bypass Project Update

February 18, 2021

Welcome



All lines are **muted**.



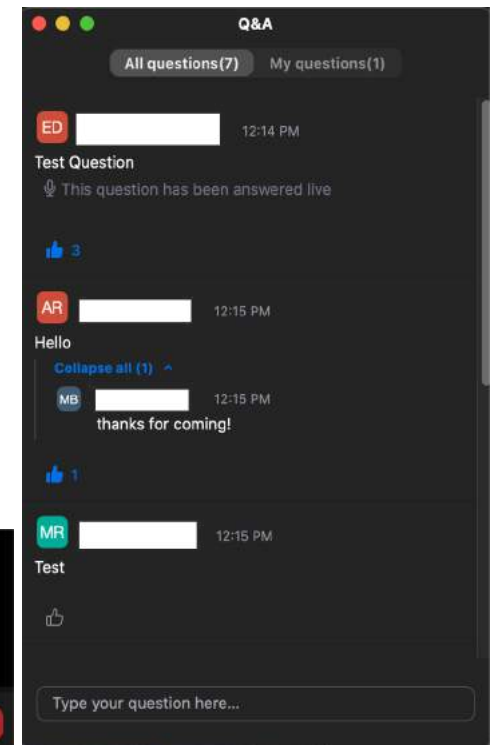
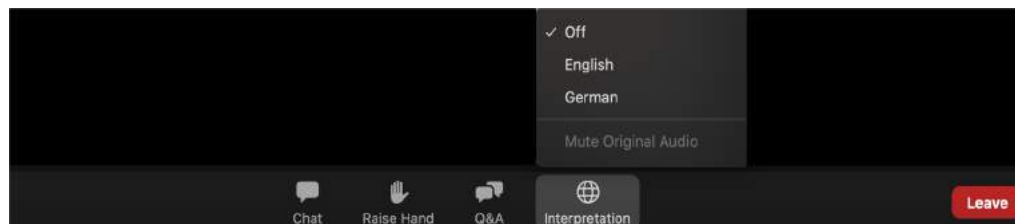
Q&A: Submit using the Q&A function.
We will hold time to **address relevant questions** .

You are welcome to **submit questions in English or Spanish**
using the **Zoom Q&A function**.

You can also “Like” questions asked by other participants

If you are using audio, submit questions to
info@route28bypass.com

**For audio
in Spanish:**



Prince William Board of County Supervisors

Yesli Vega

Coles District Supervisor



Prince William Board of County Supervisors

Jeanine Lawson

Brentsville District Supervisor



Prince William Board of County Supervisors

Ann B. Wheeler

Chairwoman-at-Large



Elected Officials



Panelists

Paolo Belita

Planning Manager, Prince William County Department of Transportation

Rick Canizales

Director, Prince William County Department of Transportation

David McGettigan

Long-Range Planning Manager, Prince William County Planning Office

Tom Smith

Director, Prince William County Public Works

Seth Hendler-Voss

Director, Prince William County Parks, Recreation and Office of Tourism



Purpose

To inform the citizens of Prince William County of the current status of the Route 28 Bypass project.

Outcomes

- Understanding of Route 28 Bypass project
- Prince William County residents provided with background and the projected timeline.
- Opportunity to explore questions about the project.

Agenda

- 1 **Welcome and Opening Remarks**
- 2 **Project Overview and Current Status**
- 3 **What to Expect Next: Design Phase**
- 4 **Keeping the Community Informed**
- 5 **Question and Answer Panel**
- 6 **Closing Remarks**





Route 28 Bypass
Project Overview

THE NEED FOR THE ROUTE 28 BYPASS

The intent of this project is to design a roadway that has the greatest long-term impact on traffic congestion by improving travel times and network reliability for the more than 57,000 vehicles traveling the Route 28 corridor per day with the smallest community impact to homes and businesses.



Route 28 Bypass

Guiding Principles



Guiding Principles

- We seek to **honor and respect all people impacted** by and vested in the Route 28 Bypass.
- Our citizens are afforded **equitable access to all available resources** and information.
- We commit to **partnering with diverse stakeholders** to foster a path forward that considers multiple perspectives.
- We **respect** the environment, **strive** to improve the land, and **limit** negative impacts.
- We prioritize **safety** and **fiscal responsibility**.



THE PROJECT OVERVIEW: 4 Phases

1

2016 – 2020

Plan & Study

- Develop concepts
- Conduct feasibility, environmental, & other studies
- Evaluate the options



Plan & Study Complete: Route Selected

Approved by PWC Board of
County Supervisors
in **Sep. 2020**

2

2020 – 2023

Design & Engineering

- Release RFP
- Select engineering design firm
- Complete comprehensive design process
- Determine the exact location and final design of Route 28 Bypass
- US Army Corps of Engineers Permits
- PWC Board of County Supervisors will review and approve the final design

3

2023 – 2025

Right of Way & Utilities

- Begin working with affected residents
- Utility work

4

2025-2028

Construction

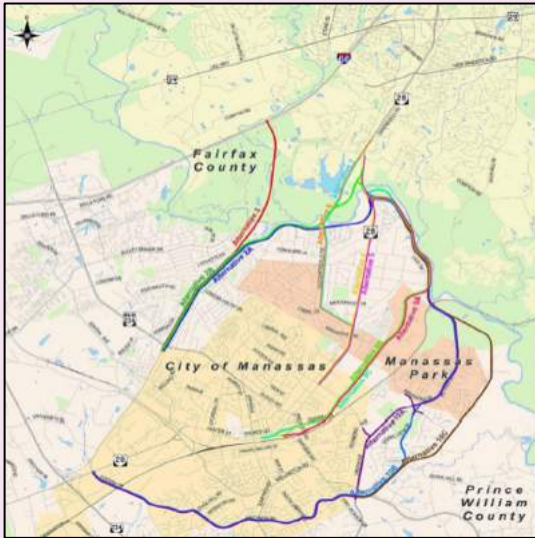
- Groundbreaking
- Construction
- Ribbon cutting



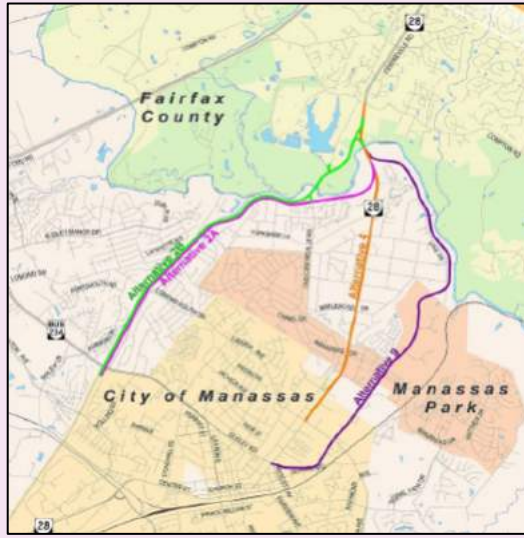
1

Plan & Study: Milestones

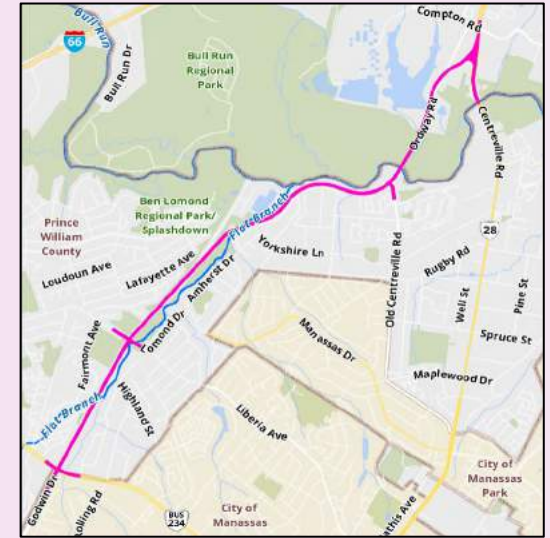
2016
Multiple Options
Evaluated



2018
Three Alternatives
Evaluated



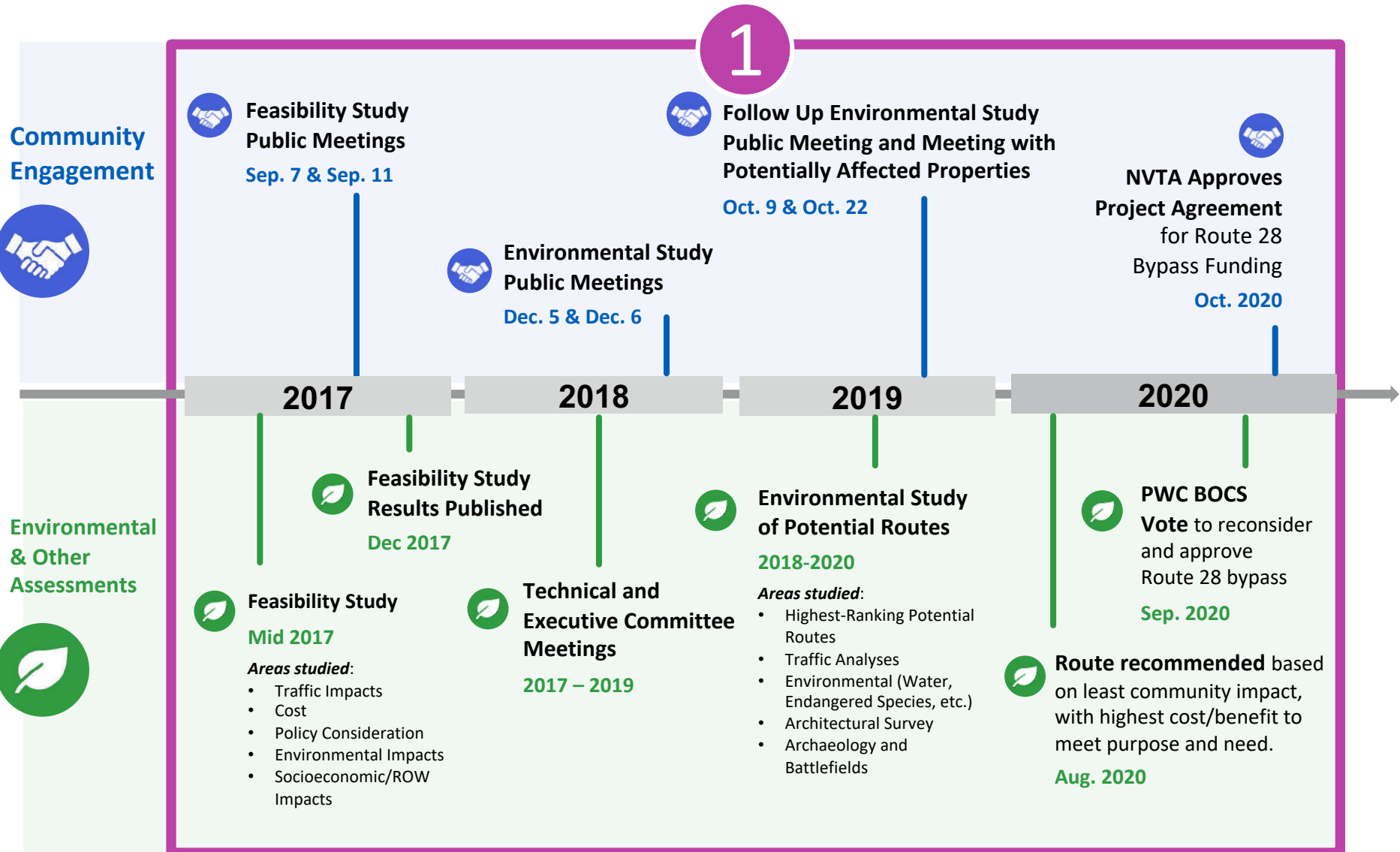
2020
Route 28 Bypass
Option Selected

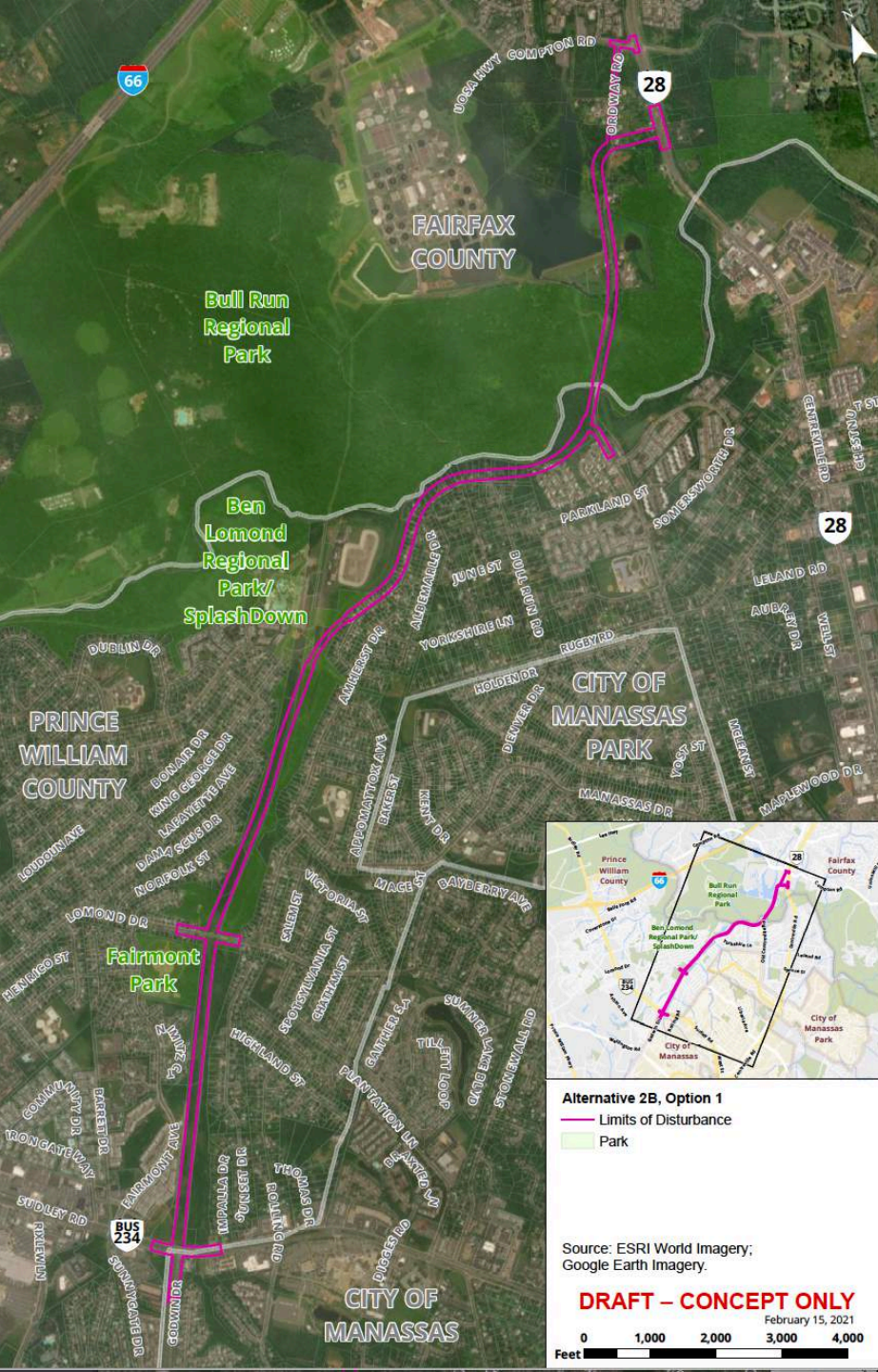


- The Route 28 Corridor Feasibility Study, completed in late 2017, **identified and evaluated numerous project alternatives, including transit and reversible lanes.**
- In the Route 28 Feasibility Study, **Alternative 2B was the highest ranked alternative followed by Alternatives 2A and 4 respectively.** All three were carried over into the Environmental Study for further analysis.
- **Alternative 2B** was selected as the Route 28 Bypass Option.



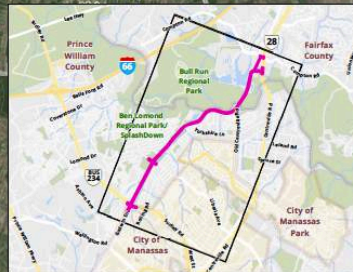
1 Plan & Study





Prince William Board of
County Supervisors (BOCS) endorsed
the Route 28 Bypass Option in
September 2020

- This represents the Route 28 Bypass corridor concept.
- The specifics of the corridor will be **determined** during the Design and Engineering Phase (Phase 2).
- The actual Bypass will have a smaller footprint than currently represented on this map.



Alternative 2B, Option 1
 — Limits of Disturbance
 ■ Park

Source: ESRI World Imagery;
Google Earth Imagery.

DRAFT – CONCEPT ONLY

February 15, 2021



What's Next?

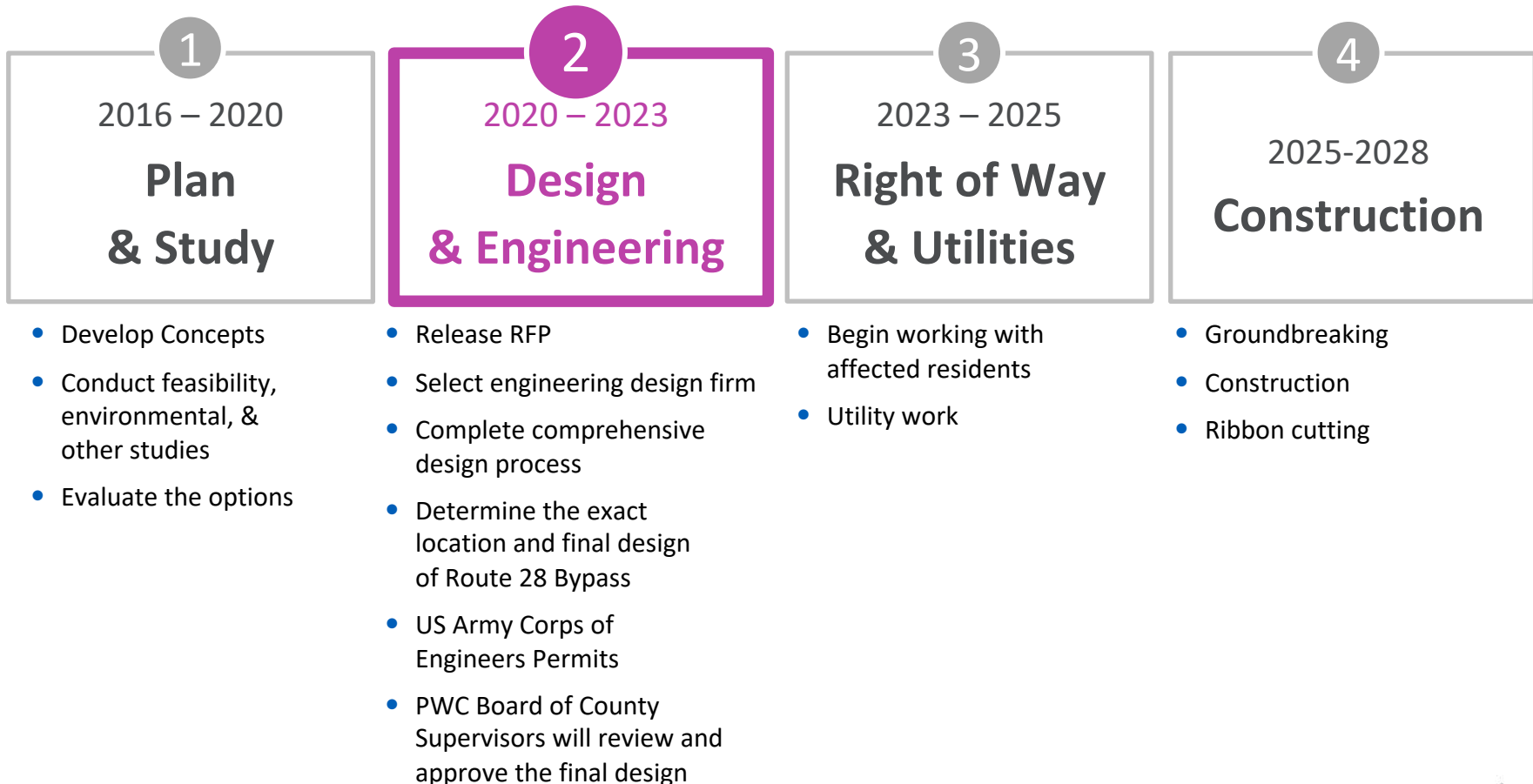
2

Design Phase



Project Overview: 4 Phases

The DOT team is currently conducting the second phase, Design & Engineering.
This includes:



The following efforts will continue throughout the entire project lifecycle.

1. Public Information Meetings

Hosted by the PWC DOT, and other partners like the BOCS and county departments.

2. Route 28 Bypass Website

3. News and Social Media

Board of Supervisors and other PWC Listservs,
Facebook, Twitter





Session Materials and Recording

A recording of this session will be **available on the project website.**

www.route28bypass.com

FAQs will also be updated based on questions from this evening



Upcoming Events

Additional events will be scheduled this spring, and announced on route28bypass.com



Additional Questions?

Please visit the website, www.route28bypass.com

or

Email your questions and comments to:

Route28bypass@pwcgov.org



Question & Answer Panel



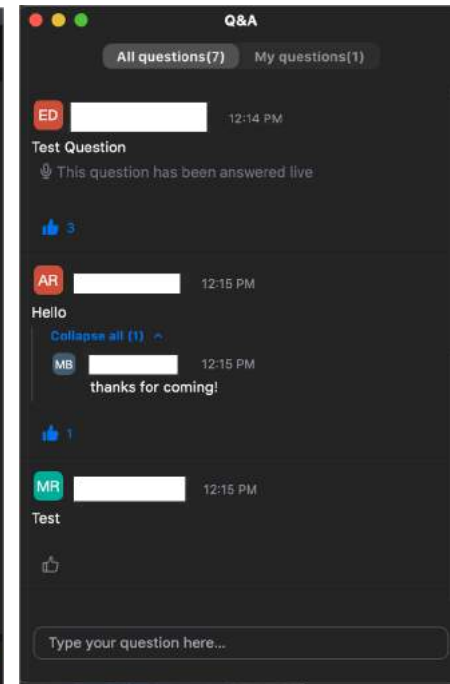
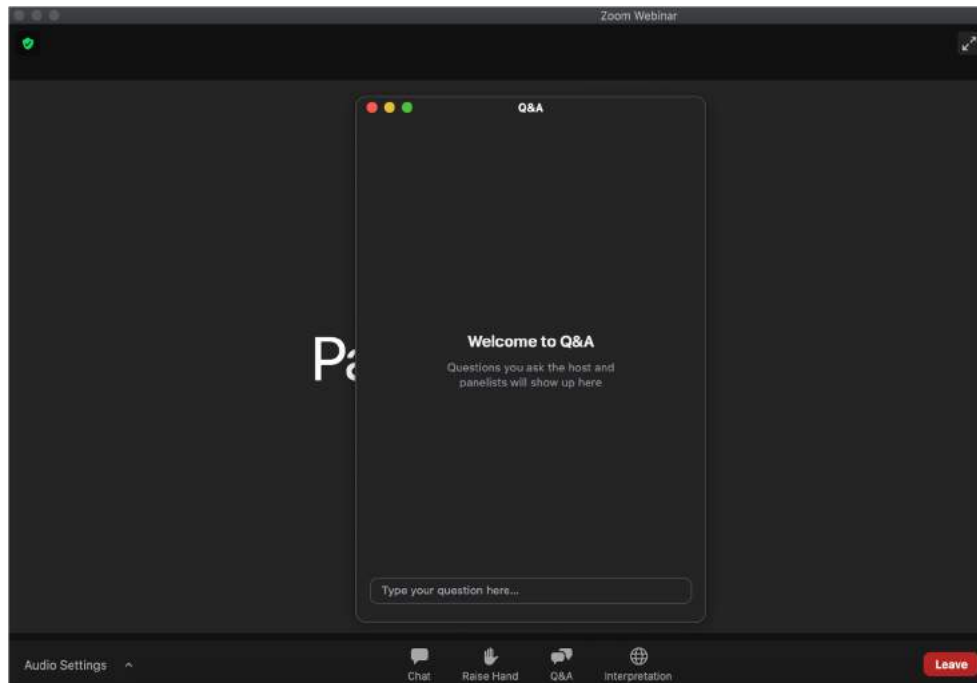
Reminder: Q & A



All participant lines are muted.



You are welcome to **submit questions** using the **Q&A function** in the Zoom Q&A chat box at any time. This can be found by clicking the Q&A icon at the bottom of the Zoom screen.



Thank You



Website

www.route28bypass.com

Questions

Route28Bypass@pwcgov.org